



# ROUTESMS 2 WAY MESSAGING SYSTEM

**INDEX PAGE**

<b>Table Of Contents</b>	<b>Page No.</b>
<b>Copyright</b>	3
<b>Installation and User Manual</b>	4
<b>Introduction</b>	5
<b>Before You Start</b>	6
<b>System Requirements</b>	6
<b>Basic Concepts</b>	7
▪ <b>What is GSM</b>	
▪ <b>Who are ETSI</b>	
▪ <b>What is CDMA</b>	
▪ <b>What is SMS</b>	
▪ <b>2 way messaging</b>	
<b>Getting started</b>	
▪ <b>Installing and starting the software</b>	8
▪ <b>Login section</b>	8
▪ <b>2way Admin Interface Specifications:</b>	
• <i>Manage Connection</i>	9
• <i>Admin Section</i>	11
• <i>Send message</i>	12
• <i>ViewLogsUnderProcessing</i>	18
• <i>ViewTransmittedLogs</i>	19
• <i>ViewErrorLogs</i>	20
• <i>ChangeUserNameAndPassword</i>	



This product should not Copied, Reproduced, Translated, or Reduced to any medium in whole or in part, without prior Permission from RouteSms Solutions Pvt. Ltd. All information and content in this document is accurate and complete.

For more information on specific products and technical support please contact.

**RouteSms Solutions Limited.**  
Office No. 401. 4th Floor,  
Evershine Mall, Mind Space,  
New Link Road, Malad (W),  
Mumbai - 400 064, India.  
Tel : 91-22-40337676/77/79/80-99  
Fax : 91-22-40337650

E-mail: [info@routesms.com](mailto:info@routesms.com)  
Web-site: <http://www.routesms.com>

Copyright

Copyright © 2006 – 2008 **RouteSms Solutions Limited.**  
All Rights Reserved

## Installation and User Manual

## **Introduction**

### **2-Way Messaging System**

**2 Way Messaging System** is PC based messaging solution where a user can send his request in form of “KEY WORD” on a 10 digit mobile number .The system receives message with the help of GSM modem attached to it. System receives message, validates the keyword and sends back the desired response to the user based on the “KEY WORD” received. It consists of an admin interface to monitor messages and two applications to send and receive messages.



**BEFORE YOU START**

Thank you for choosing RouteSms **2-Way Messaging System**.

Before installing the software we recommend that you should check the following requirement for better performance and reduced effort in operating the software.

<b><u>System Requirements</u></b> Processor Operating System Memory Display Mouse Network	Pentium or Higher version Microsoft Windows NT / 2000 and above. 32MB and above VGA or Better Recommended IP Version 4 or above
<b><u>Software Requirement</u></b> . Net framework 2.0	. Net Software is to be installed

## Basic Concepts

### What is GSM?

GSM stands for Global System for Mobiles. This is a world-wide standard for digital cellular telephony, or as most people know them Digital Mobile Telephones. GSM is a published standard by ETSI, and has now enjoys widespread implementation all over the world.

### Who are ETSI?

ETSI stands for European Telecommunications Standards Institute. This is the body that created the specification for GSM, they publish their specifications to manufacturers and software developers who can then build equipment and software that can work together properly.

### What is CDMA?

CDMA stands for Code Division Multiple Access. CDMA is a "spread spectrum" technology, allowing many users to occupy the same time and frequency allocations in a given band/space. As its name implies, CDMA assigns unique codes to each communication to differentiate it from others in the same spectrum. In a world of finite spectrum resources, CDMA enables many more people to share the airwaves at the same time than do alternative technologies.

### What is SMS?

SMS stands for Short Message Service. A "Short Message" may contain up to 7 Bit 160 characters or 140 octets of binary data. A message in format of normal text, custom ring tones and graphics and operator logos and some messages directly appear on screen is called flash message.

### What is Bulk SMS?

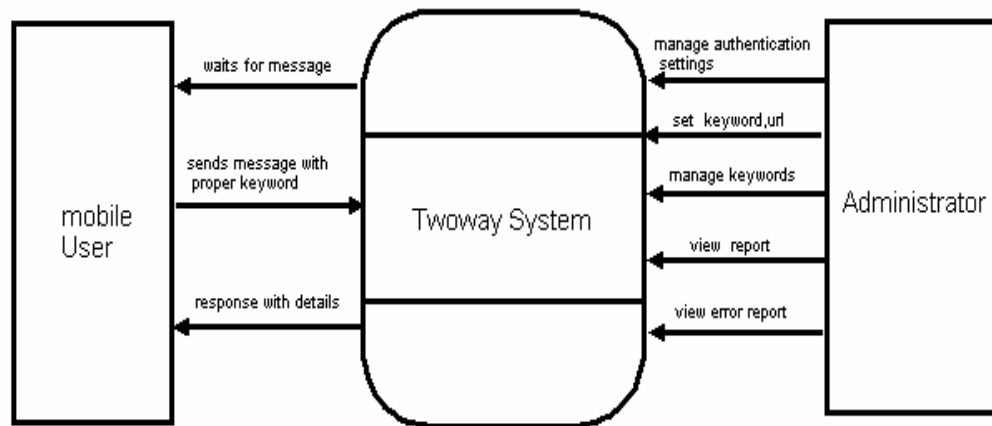
Bulk SMS is a "Short Message" may contain up to 7 Bit 160 characters or 140 octets of binary data. A message are in format of Text, Ring Tones, Graphics, Logo and flash (messages which directly appear on screen is called flash message). The difference between the bulk and normal messages is the quantity in which it is sent. When messages are intended for more than one recipient is called Bulk Messages. Where sender and Message remain same only the recipient changes.

### What is 2-Way Messaging?

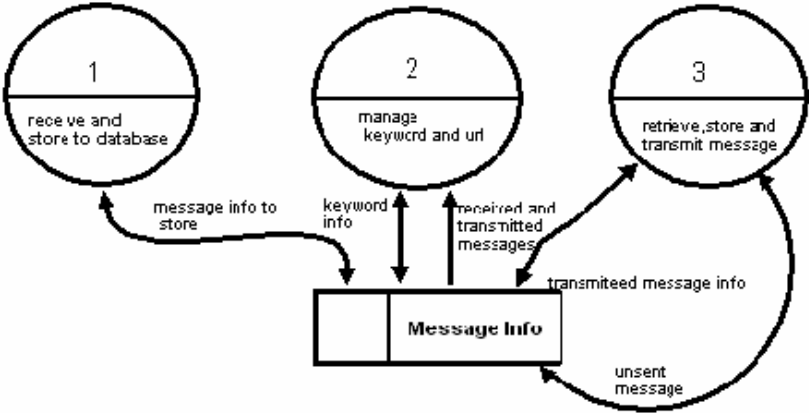
Two way messaging is a system where the mobile users send to and receive from a particular number with a specific KEY WORD. The receiving system analyses the keyword and sends Reply to the sender.

**Data Flow Diagrams**

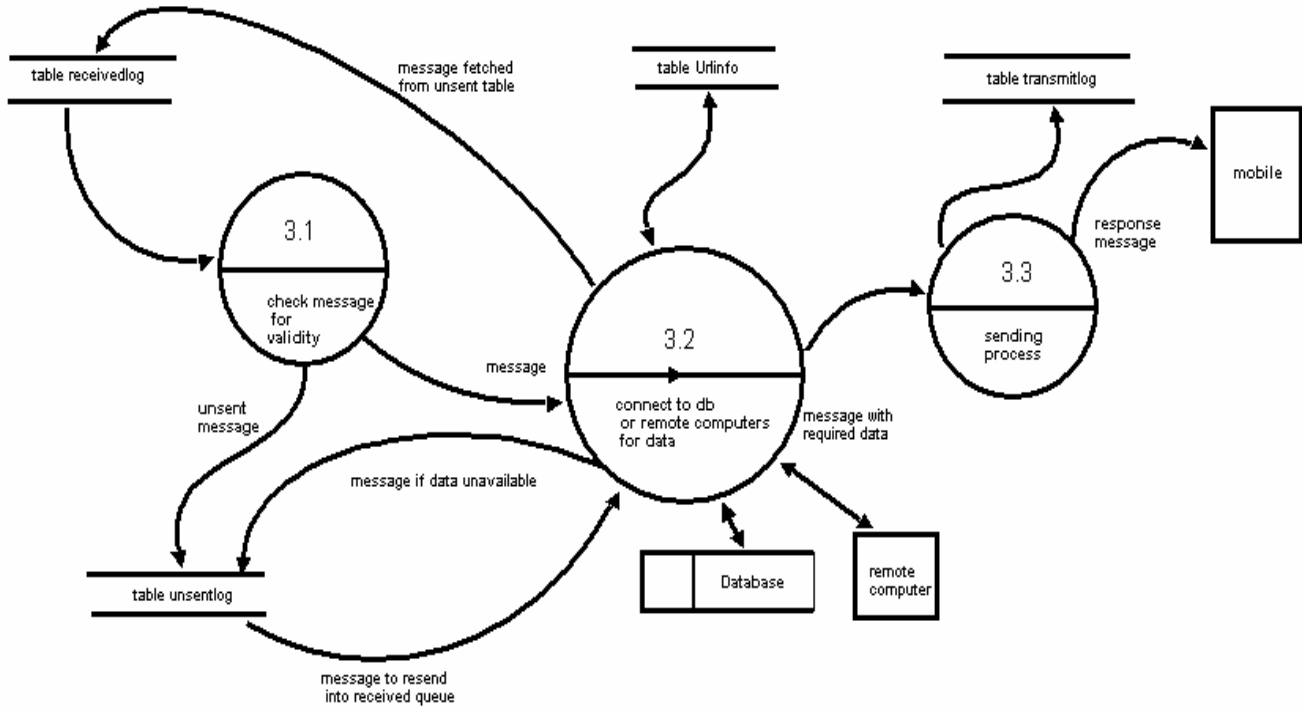
context-level DFD



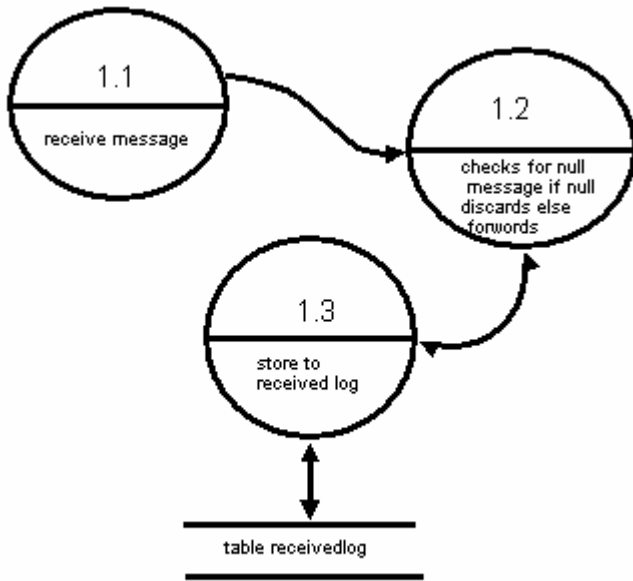
First Level DFD

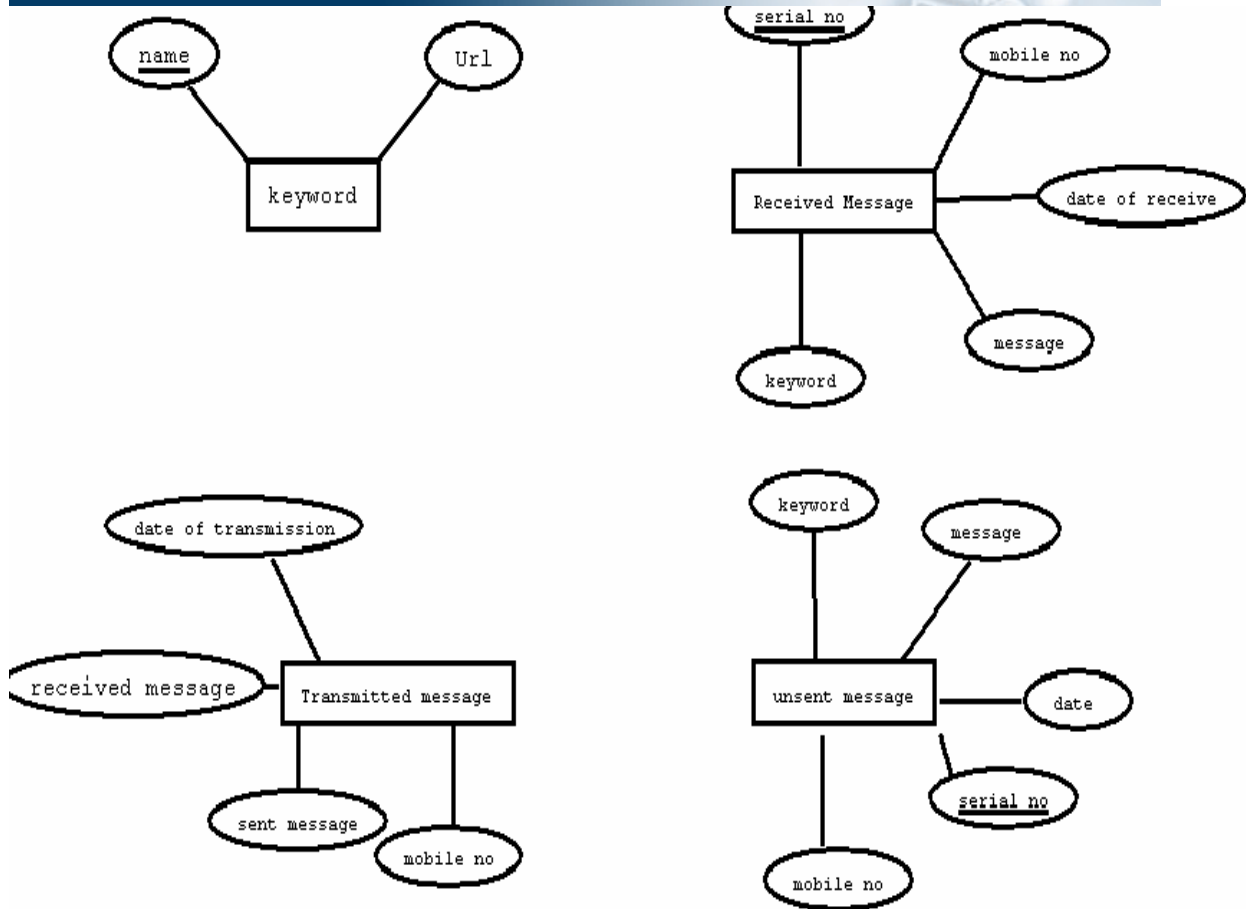


Second level DFD



Second level dfd





## **Getting Started**

To use 2-Way Messaging system the following steps should be followed:

### **1.Install 2-Way Messaging Software**

To install the software start setup.exe.

### **2.Start Application**

Now start the application twoway\_admin from the start menu

### **Login Section**

As the application is started the following login screen appears. With proper authentication this will lead to the Admin interface.

Admin Login

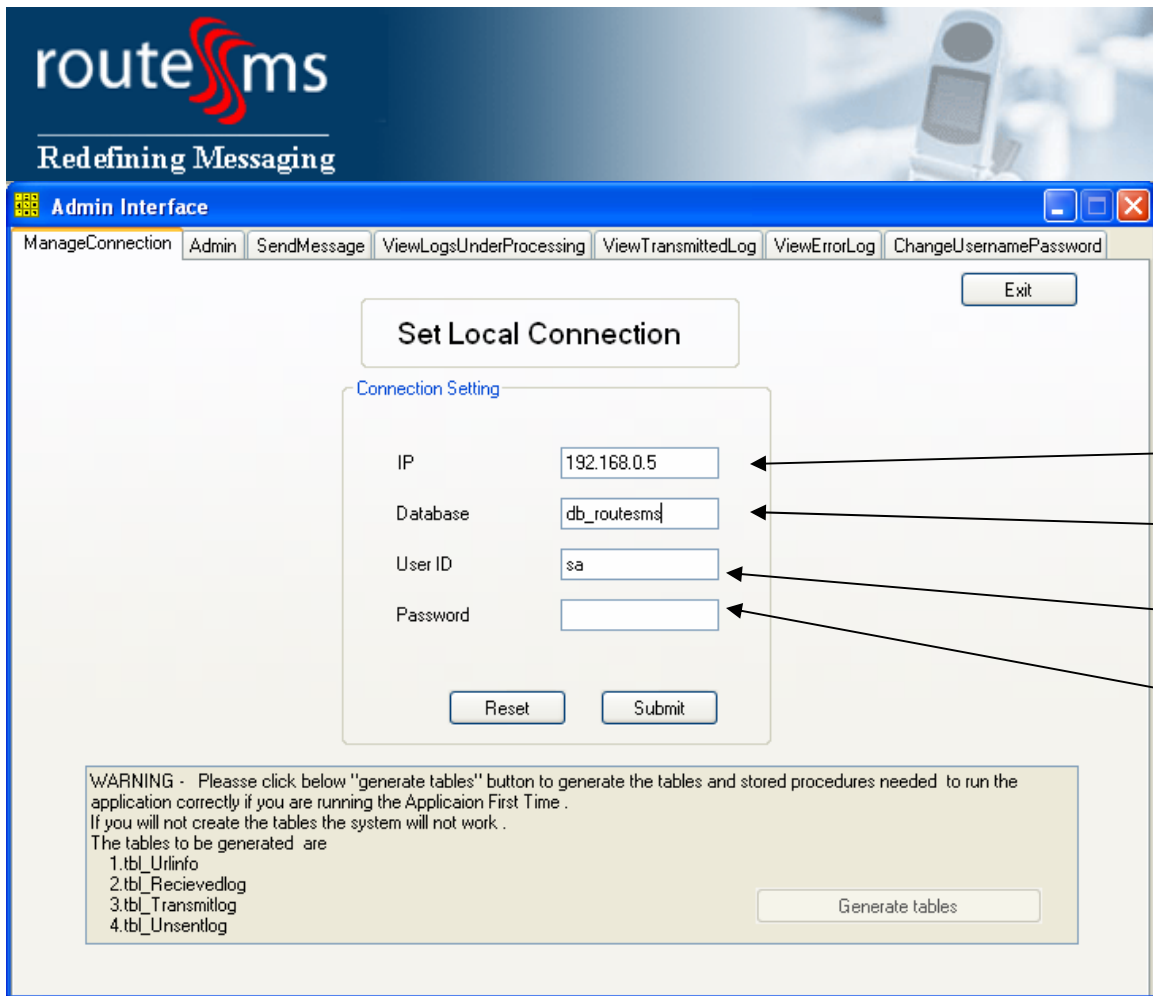
User Name

Password

Cancel Submit

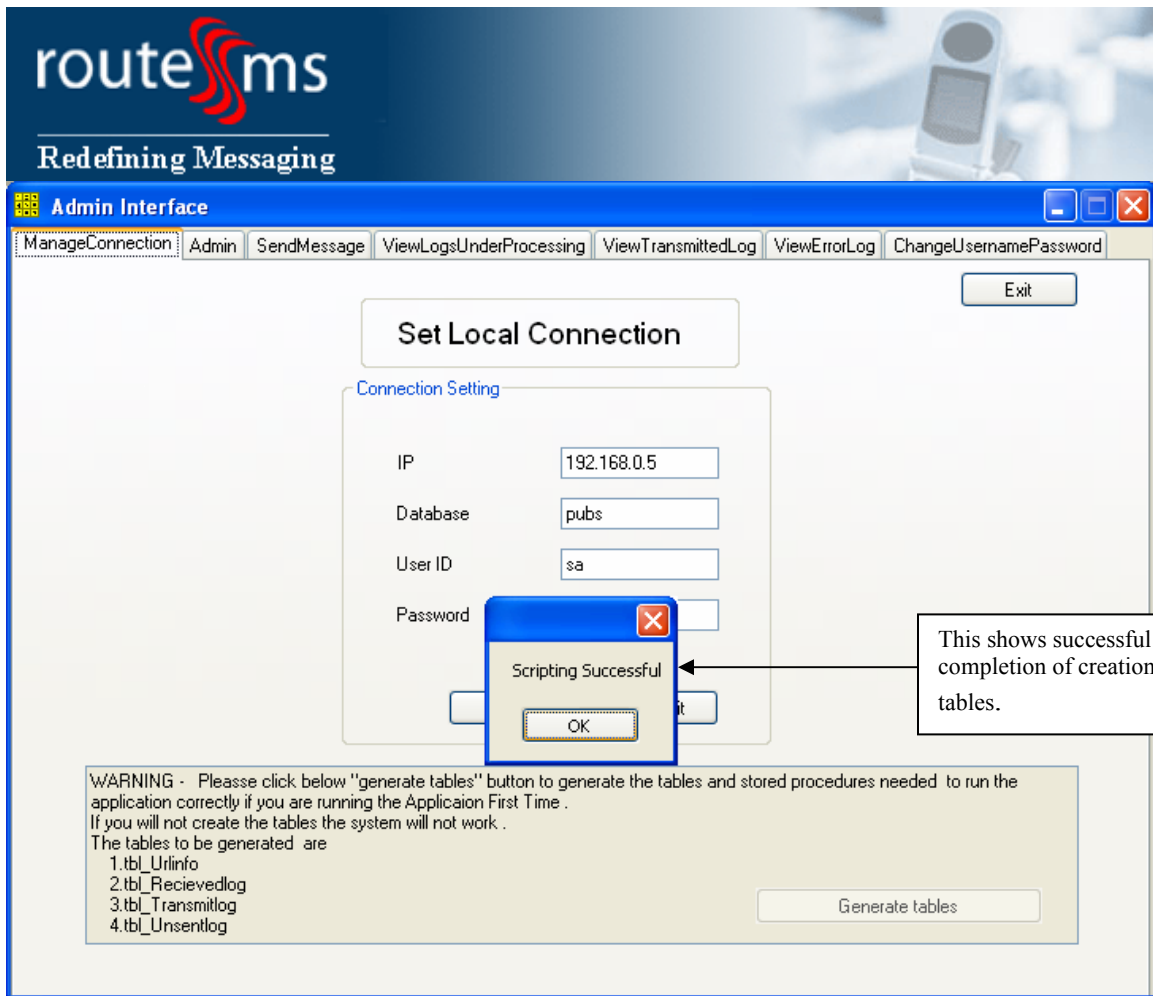
**Manage Connection**

Here you have to set the connection details for your local SQL server database as specified in the diagram i.e. IP, Database name, user id and password.



If you are using it for first time or you have changed your database settings you have to click on the **“generate tables”** button to create tables in the database given by you.

**Warning-If you will not create the tables then the system will not work.**



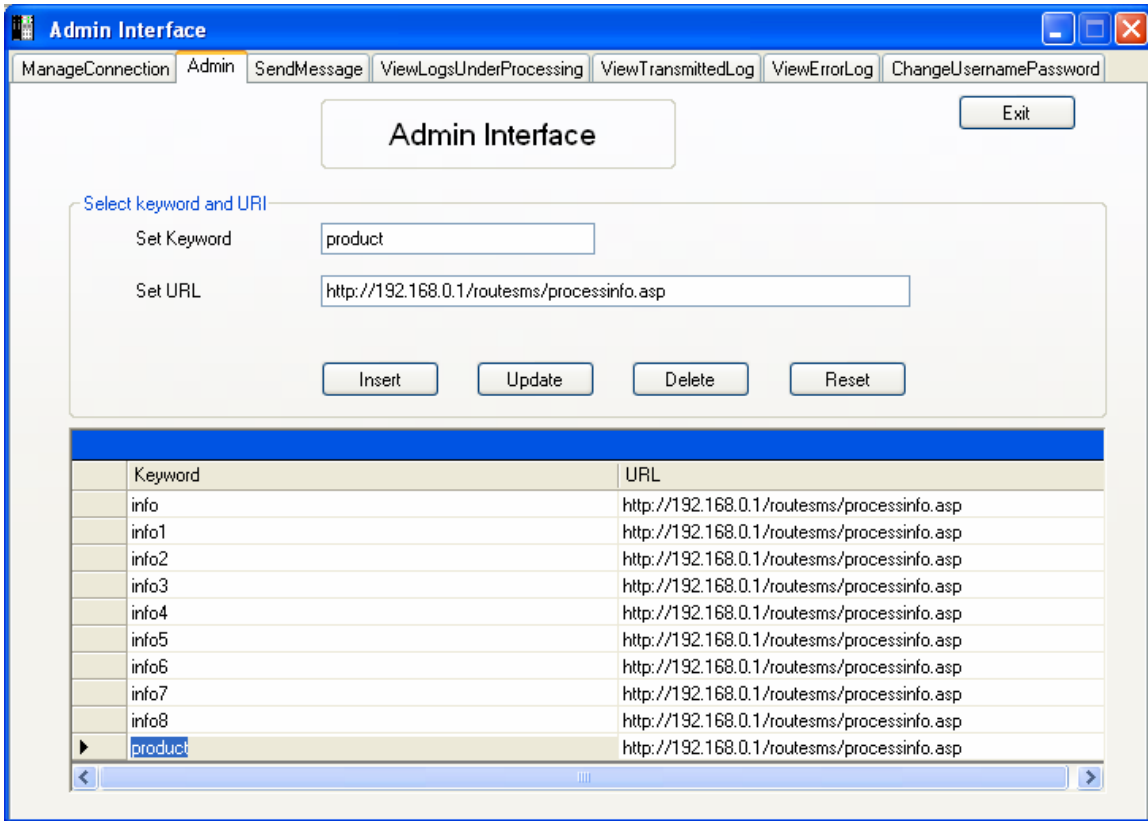
After clicking on the “**Generate Tables**” button the above screen will appear if the system creates the tables successfully.

### Admin Section

After setting up the connection select the Admin tab. In the “**set keyword**” section enter **keywords** and specify the URL in the “set Url” section, which will be used to fetch data against the keyword. The URL is used to process the keyword either connecting to the database or by giving direct response. The page which URL calls consists of set of instructions in form of stored procedure, SQL statements to manipulate data for required output.

The Grid shows the Urls and Keywords.

The insert, update and delete button are provided to manage keywords and respective Urls.



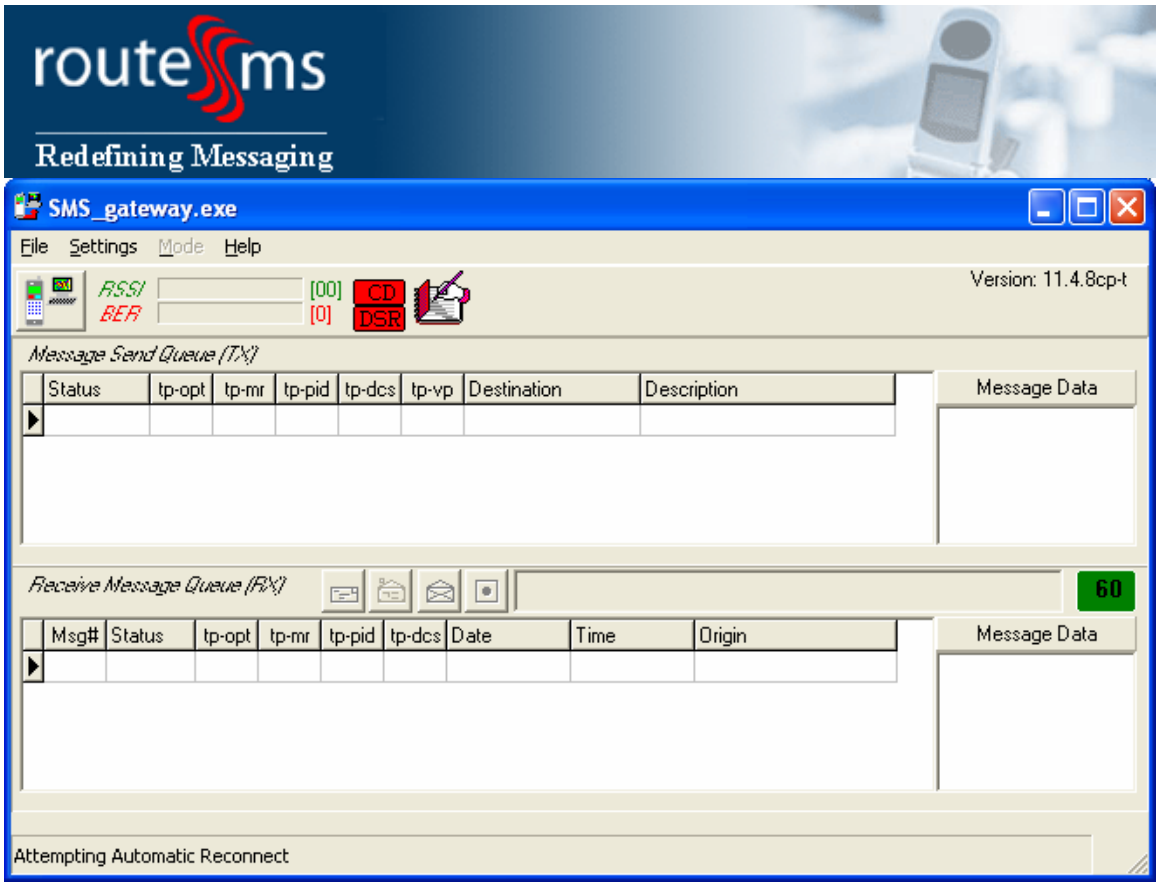
### **Send Message**

This section is used to send and receive messages by starting corresponding applications. It contains two buttons

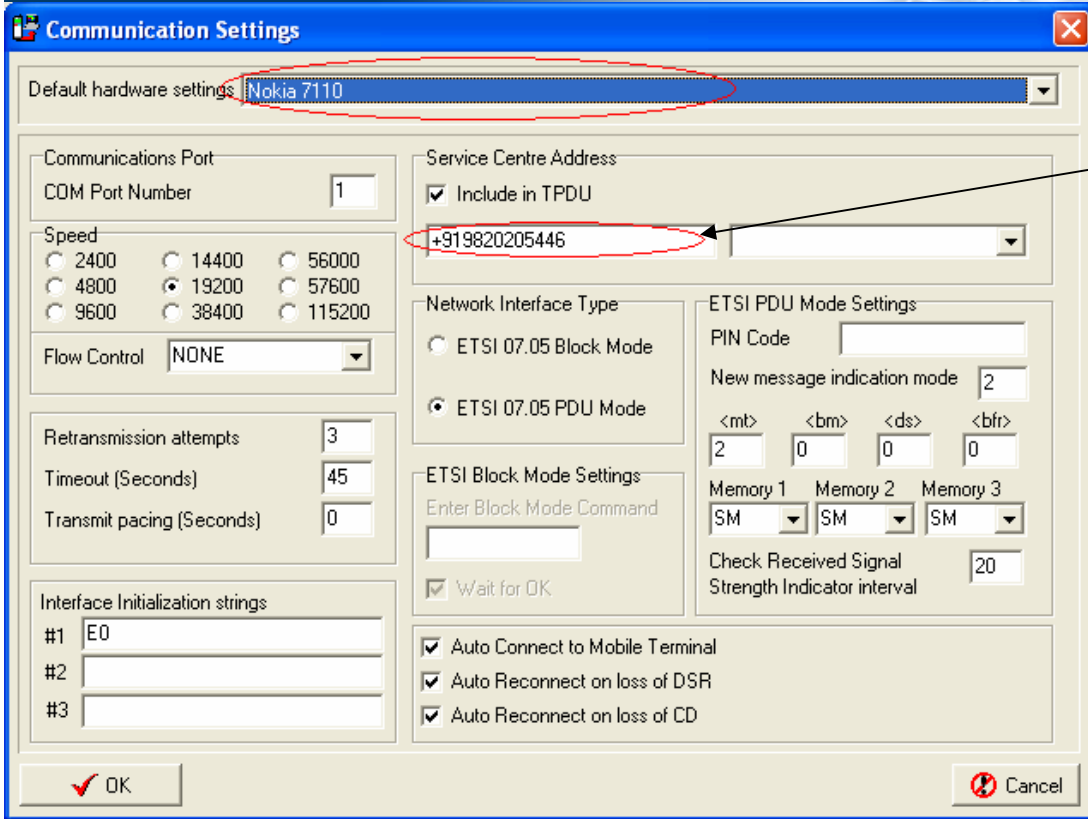
1. [Click here to start SMS\\_Gateway](#)
2. [Click here to start sender](#)



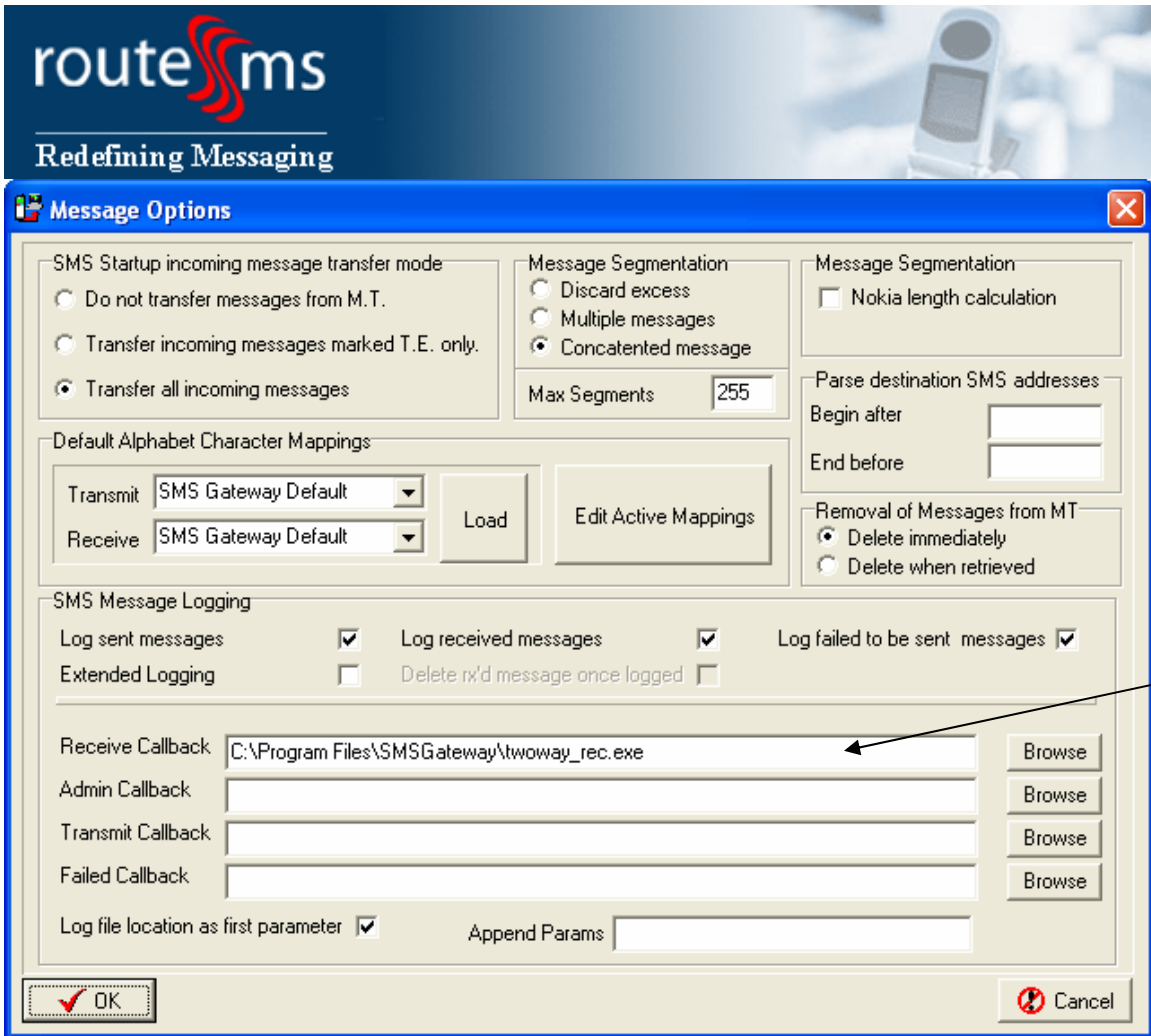
After you click on the “Click here to start SMS\_Gateway” you will find the following application running on your desktop.



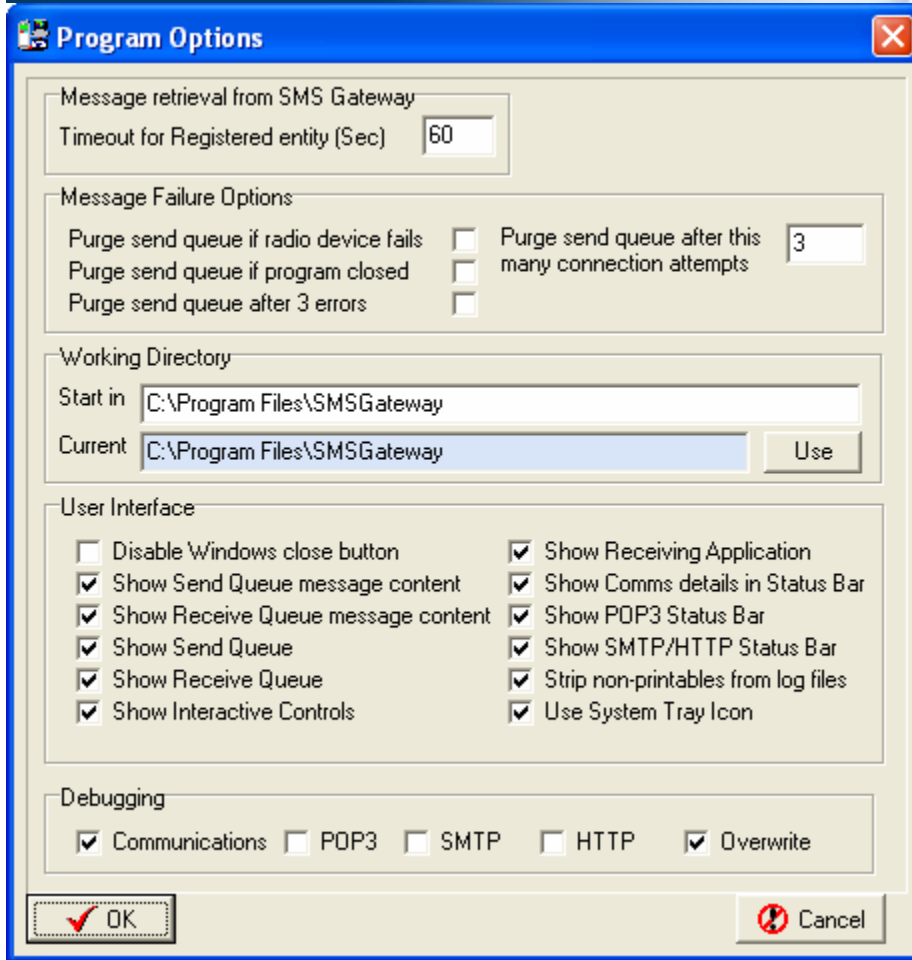
To start receiving messages through it, some preliminary settings should be taken care of. In that application goes to “settings” tab, click on “communications” and under “**service center address**” put the service center no provided to you by your service provider. Set the “**default hardware settings**”.



Now go to "Message option" in the settings tab and tick the radio buttons as shown below. In the receive callback section type the path of the sender.exe.

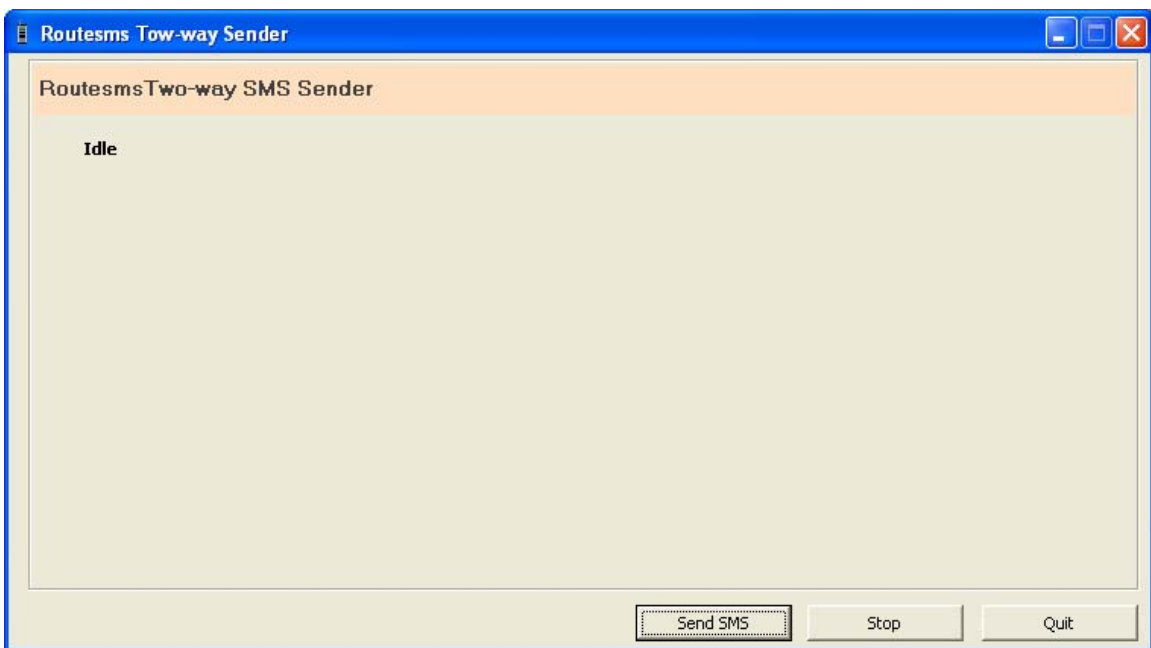


At last go to “**program options**” and click on “Use” button with the installation path shown in the textbox



**Start Sender**

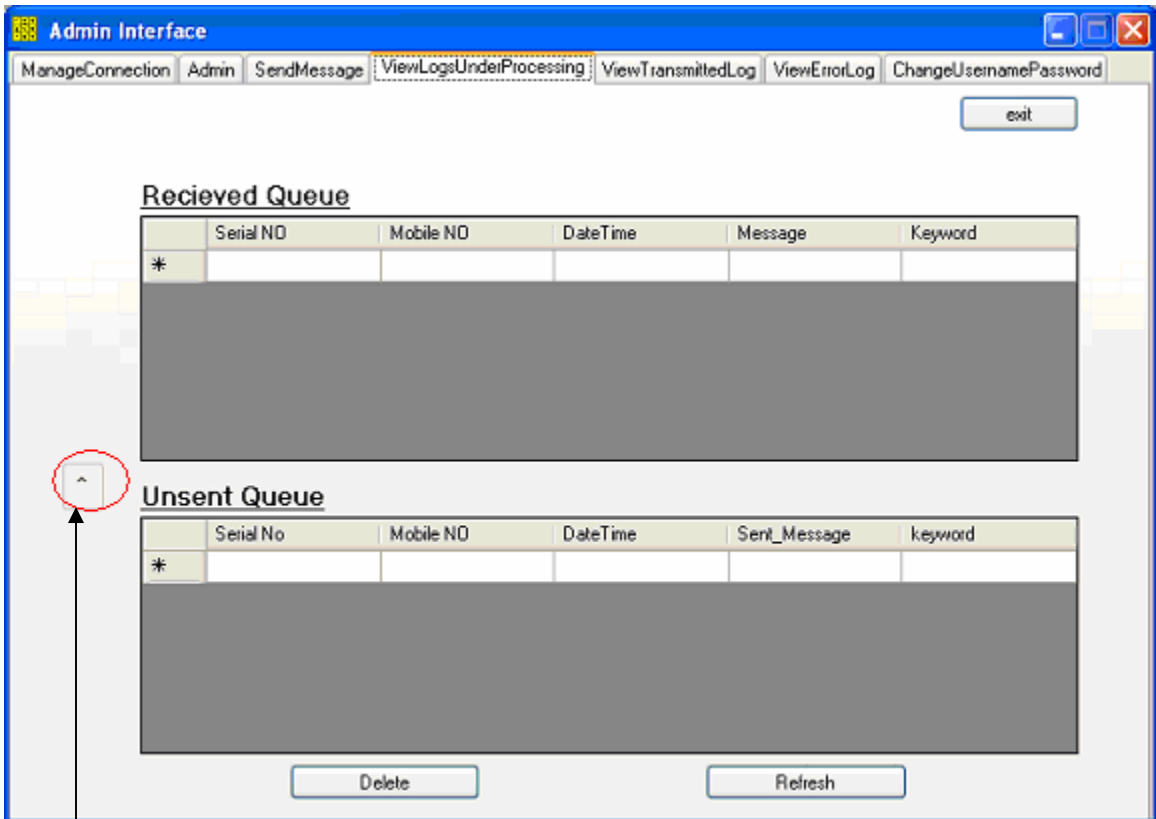
To start the sender click on the “**click here to start sender**” to send the messages



### ViewLogsUnderProcessing

This section gives a view of all the messages under processing.

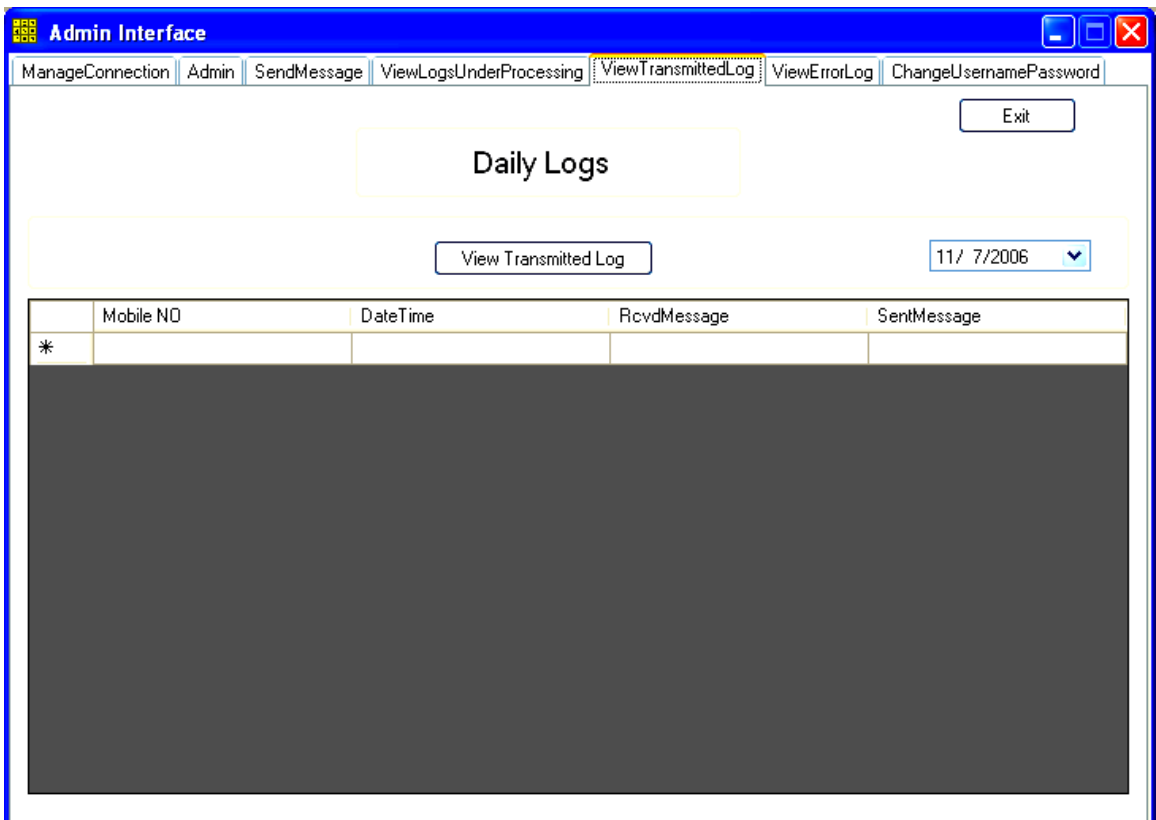
The “**received Queue**” section will show the messages received and the “**unsent queue**” section shows the messages which are unsent due to some reason and can be resent to received queue for processing.



To send unsent messages from unsent queue to received queue for processing.

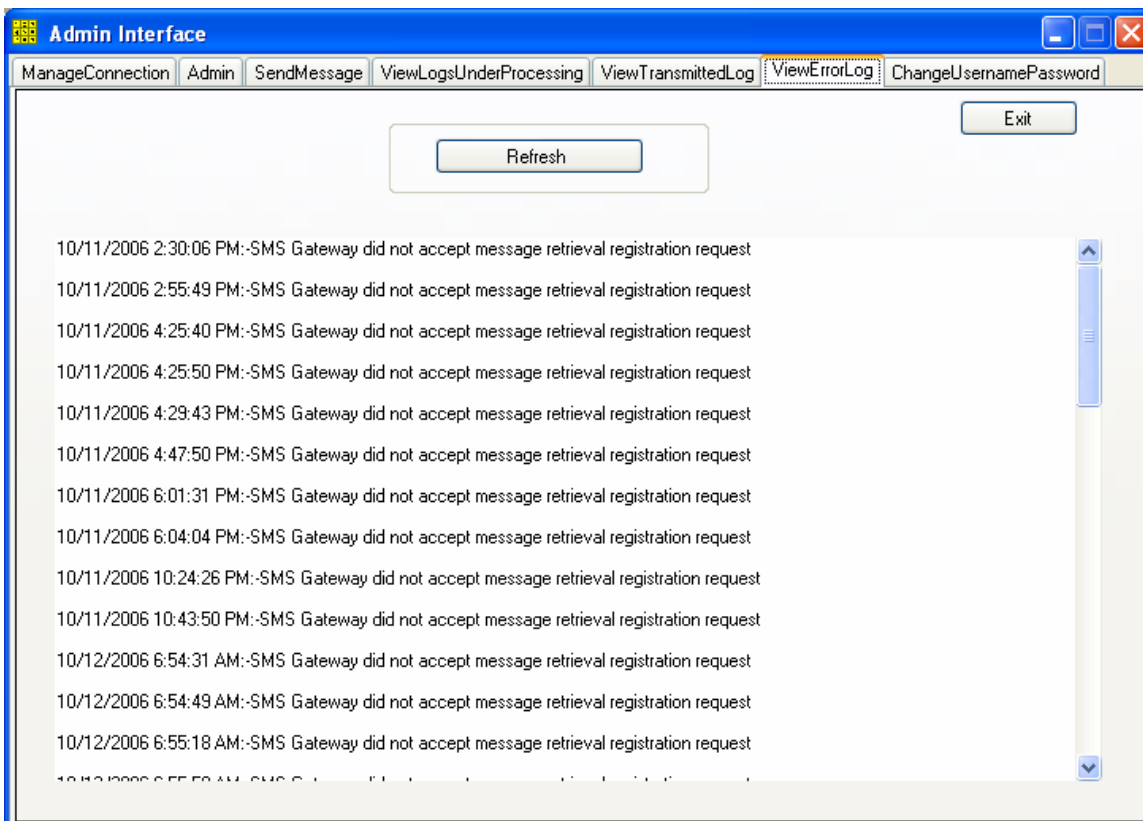
**ViewTransmittedLog**

This section shows the messages, which are transmitted till to date. You can choose a date to view the transmitted messages for that particular date.



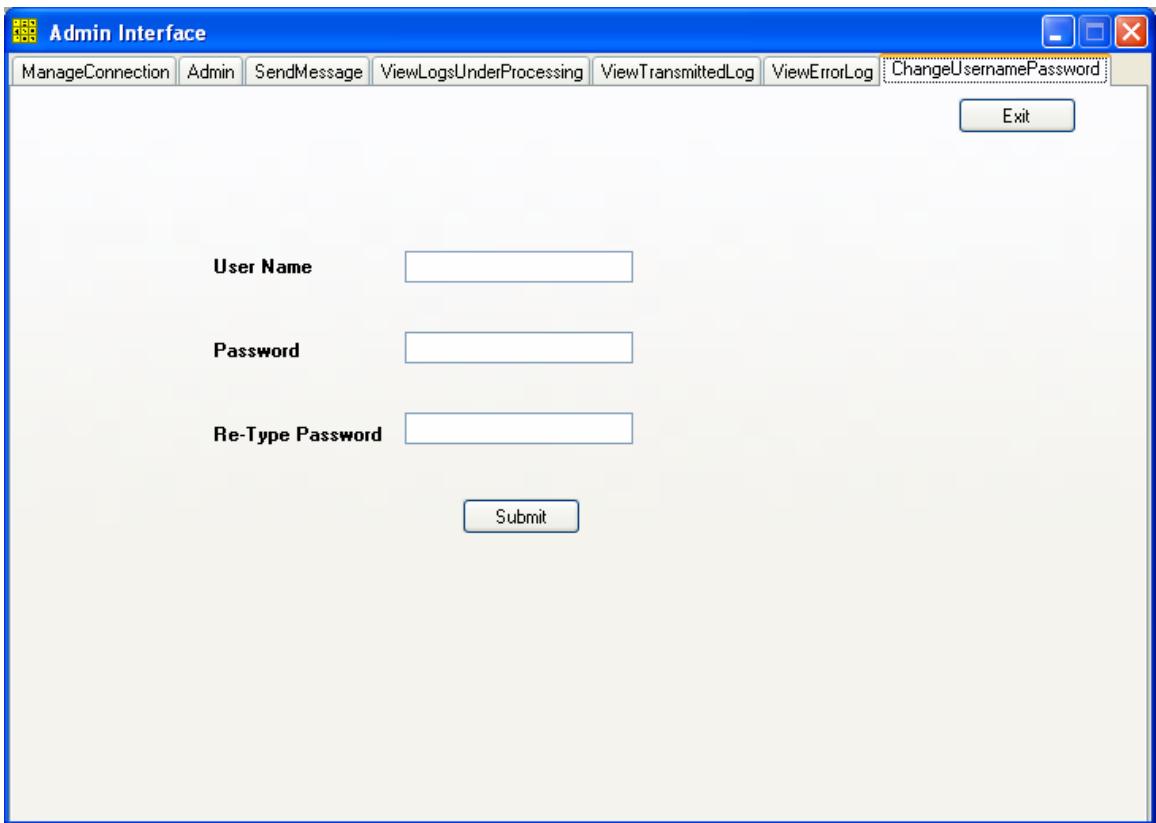
**ViewErrorLog**

This section refers to the error log generated with the errors thrown.



## ChangeUserNamePassword

In this section the user id and password can be managed for the login purpose.



The screenshot shows a web browser window titled "Admin Interface". The window has a blue title bar and a menu bar with the following items: ManageConnection, Admin, SendMessage, ViewLogsUnderProcessing, ViewTransmittedLog, ViewErrorLog, and ChangeUsernamePassword. The main content area is white and contains the following form elements:

- An "Exit" button in the top right corner.
- A "User Name" label followed by a text input field.
- A "Password" label followed by a text input field.
- A "Re-Type Password" label followed by a text input field.
- A "Submit" button centered below the input fields.

**THANKING YOU  
FOR USING  
RouteSms twoway system**